



ROG STRIX OLED XG27ACDMS

USER GUIDE

First Edition

May 2025

Copyright © 2025 ASUSTeK COMPUTER INC. All Rights Reserved.

No part of this manual, including the products and software described in it, may be reproduced, transmitted, transcribed, stored in a retrieval system, or translated into any language in any form or by any means, except documentation kept by the purchaser for backup purposes, without the express written permission of ASUSTeK COMPUTER INC. ("ASUS").

Product warranty or service will not be extended if: (1) the product is repaired, modified or altered, unless such repair, modification or alteration is authorized in writing by ASUS; or (2) the serial number of the product is defaced or missing.

ASUS PROVIDES THIS MANUAL "AS IS" WITHOUT WARRANTY OF ANY KIND, EITHER EXPRESS OR IMPLIED, INCLUDING BUT NOT LIMITED TO THE IMPLIED WARRANTIES OR CONDITIONS OF MERCHANTABILITY OR FITNESS FOR A PARTICULAR PURPOSE. IN NO EVENT SHALL ASUS, ITS DIRECTORS, OFFICERS, EMPLOYEES OR AGENTS BE LIABLE FOR ANY INDIRECT, SPECIAL, INCIDENTAL, OR CONSEQUENTIAL DAMAGES (INCLUDING DAMAGES FOR LOSS OF PROFITS, LOSS OF BUSINESS, LOSS OF USE OR DATA, INTERRUPTION OF BUSINESS AND THE LIKE), EVEN IF ASUS HAS BEEN ADVISED OF THE POSSIBILITY OF SUCH DAMAGES ARISING FROM ANY DEFECT OR ERROR IN THIS MANUAL OR PRODUCT.

SPECIFICATIONS AND INFORMATION CONTAINED IN THIS MANUAL ARE FURNISHED FOR INFORMATIONAL USE ONLY, AND ARE SUBJECT TO CHANGE AT ANY TIME WITHOUT NOTICE, AND SHOULD NOT BE CONSTRUED AS A COMMITMENT BY ASUS. ASUS ASSUMES NO RESPONSIBILITY OR LIABILITY FOR ANY ERRORS OR INACCURACIES THAT MAY APPEAR IN THIS MANUAL, INCLUDING THE PRODUCTS AND SOFTWARE DESCRIBED IN IT.

Products and corporate names appearing in this manual may or may not be registered trademarks or copyrights of their respective companies, and are used only for identification or explanation and to the owners' benefit, without intent to infringe.

Contents

Contents	iii
Notices.....	iv
Safety information	v
Care & Cleaning.....	vii
Takeback Services.....	viii
Product information for EU energy label.....	viii
Chapter 1: Product introduction	
1.1 Welcome!	1-1
1.2 Package contents.....	1-1
1.3 Monitor introduction	1-2
1.3.1 Front view	1-2
1.3.2 Back view.....	1-3
1.3.3 GamePlus function.....	1-4
1.3.4 GameVisual function.....	1-6
1.3.5 Other Function(s)	1-7
Chapter 2: Setup	
2.1 Attaching the arm/base	2-1
2.2 Cable management	2-2
2.3 Detaching the arm/base (for VESA wall mount).....	2-2
2.4 Adjusting the monitor.....	2-3
2.5 Connecting the cables.....	2-4
2.6 Turning on/off the monitor	2-5
Chapter 3: General instructions	
3.1 OSD (On-Screen Display) menu	3-1
3.1.1 How to reconfigure.....	3-1
3.1.2 OSD function introduction	3-2
3.2 Specifications summary.....	3-11
3.3 Outline dimensions.....	3-13
3.4 Troubleshooting (FAQ).....	3-14
3.5 Supported operating modes	3-15

Notices

Federal Communications Commission Statement

This device complies with Part 15 of the FCC Rules. Operation is subject to the following two conditions:

- This device may not cause harmful interference, and
- This device must accept any interference received including interference that may cause undesired operation.

This equipment has been tested and found to comply with the limits for a Class B digital device, pursuant to Part 15 of the FCC Rules. These limits are designed to provide reasonable protection against harmful interference in a residential installation. This equipment generates, uses and can radiate radio frequency energy and, if not installed and used in accordance with the instructions, may cause harmful interference to radio communications. However, there is no guarantee that interference will not occur in a particular installation. If this equipment does cause harmful interference to radio or television reception, which can be determined by turning the equipment off and on, the user is encouraged to try to correct the interference by one or more of the following measures:

- Reorient or relocate the receiving antenna.
- Increase the separation between the equipment and receiver.
- Connect the equipment into an outlet on a circuit different from that to which the receiver is connected.
- Consult the dealer or an experienced radio/TV technician for help.



The use of shielded cables for connection of the monitor to the graphics card is required to assure compliance with FCC regulations. Changes or modifications to this unit not expressly approved by the party responsible for compliance could void the user's authority to operate this equipment.

Canadian Department of Communications Statement

This digital apparatus does not exceed the Class B limits for radio noise emissions from digital apparatus set out in the Radio Interference Regulations of the Canadian Department of Communications.

This class B digital apparatus complies with Canadian ICES-003.

This Class B digital apparatus meets all requirements of the Canadian Interference - Causing Equipment Regulations.

Cet appareil numérique de la classe B respecte toutes les exigences du Règlement sur le matériel brouilleur du Canada.



Safety information

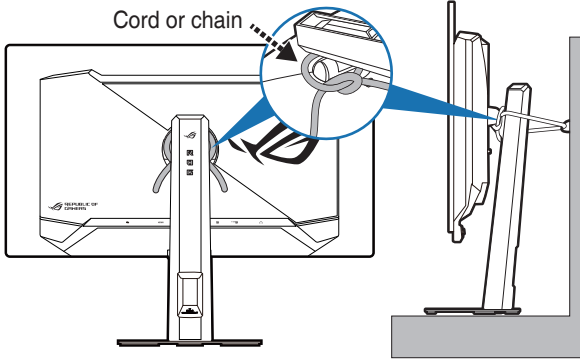
- Before setting up the monitor, carefully read all the documentation that came with the package.
- To prevent fire or shock hazard, never expose the monitor to rain or moisture.
- Never try to open the monitor cabinet. The dangerous high voltages inside the monitor may result in serious physical injury.
- If the power supply is broken, do not try to fix it by yourself. Contact a qualified service technician or your retailer.
- Before using the product, make sure all cables are correctly connected and the power cables are not damaged. If you detect any damage, contact your dealer immediately.
- Slots and openings on the back or top of the cabinet are provided for ventilation. Do not block these slots. Never place this product near or over a radiator or heat source unless proper ventilation is provided.
- The monitor should be operated only from the type of power source indicated on the label. If you are not sure of the type of power supply to your home, consult your dealer or local power company.
- Use the appropriate power plug which complies with your local power standard.
- Do not overload power strips and extension cords. Overloading can result in fire or electric shock.
- Avoid dust, humidity, and temperature extremes. Do not place the monitor in any area where it may become wet. Place the monitor on a stable surface.
- Unplug the unit during a lightning storm or if it will not be used for a long period of time. This will protect the monitor from damage due to power surges.
- Never push objects or spill liquid of any kind into the slots on the monitor cabinet.
- To ensure satisfactory operation, use the monitor only with UL listed computers which have appropriate configured receptacles marked between 100-240V AC.
- If you encounter technical problems with the monitor, contact a qualified service technician or your retailer.
- Adjustment of the volume control as well as the equalizer to other settings than the center position may increase the ear-/headphones output voltage and therefore the sound pressure level.
- Ensure to connect the power cord to a socket-outlet with earthing connection.
- The supplied power adapter and/or power cable are designed to use with the product only. Do not use with other products.



This symbol of the crossed out wheeled bin indicates that the product (electrical, electronic equipment, and mercury-containing button cell battery) should not be placed in municipal waste. Please check local regulations for disposal of electronic products.

Prevent Tipping

When using the display, fasten the monitor to a wall using a cord or chain that can support the weight of the monitor in order to prevent the monitor from falling.



- Display design may differ from those illustrated.
- Installing must be done by a qualified technician, and please contact your supplier for more information.
- For the models with net weight ≥ 7 kg. Please select the suitable way to prevent tipping.
- Tie the cord or chain to the stand and then fix it to the wall.

AEEE yönetmeliğine uygundur

Care & Cleaning

- Before you lift or reposition your monitor, it is better to disconnect the cables and power cord. Follow the correct lifting techniques when positioning the monitor. When lifting or carrying the monitor, grasp the edges of the monitor. Do not lift the display by the stand or the cord.
- Cleaning. Turn your monitor off and unplug the power cord. Clean the monitor surface with a lint-free, non-abrasive cloth. Stubborn stains may be removed with a cloth dampened with mild cleaner.
- Avoid using a cleaner containing alcohol or acetone. Use a cleaner intended for use with the monitor. Never spray cleaner directly on the screen, as it may drip inside the monitor and cause an electric shock.

The following symptoms are normal with the monitor:

- You may find slightly uneven brightness on the screen depending on the desktop pattern you use.
- When the same image is displayed for hours, an afterimage of the previous screen may remain after switching the image. The screen will recover slowly or you can turn off the Power Switch for hours.
- When the screen becomes black or flashes, or cannot work anymore, contact your dealer or service center to fix it. Do not repair the screen by yourself!

Conventions used in this guide



WARNING: Information to prevent injury to yourself when trying to complete a task.



CAUTION: Information to prevent damage to the components when trying to complete a task.



IMPORTANT: Information that you **MUST** follow to complete a task.



NOTE: Tips and additional information to aid in completing a task.

Where to find more information

Refer to the following sources for additional information and for product and software updates.

1. ASUS websites

The ASUS websites worldwide provide updated information on ASUS hardware and software products. Refer to <http://www.asus.com>

2. Optional documentation

Your product package may include optional documentation that may have been added by your dealer. These documents are not part of the standard package.

3. About Flicker

https://www.asus.com/Microsite/display/eye_care_technology/

Takeback Services

ASUS recycling and takeback programs come from our commitment to the highest standards for protecting our environment. We believe in providing solutions for our customers to be able to responsibly recycle our products, batteries and other components as well as the packaging materials.

Please go to <http://csr.asus.com/english/Takeback.htm> for detail recycling information in different region.

Product information for EU energy label



XG27ACDMS

1.1 Welcome!

Thank you for purchasing the ASUS® OLED monitor!

The latest widescreen OLED monitor from ASUS provides a broader, brighter and crystal-clear display, plus a host of features that enhance your viewing experience.

With these features, you can enjoy the convenience and delightful visual experience that the monitor brings to you!

1.2 Package contents

Check your package for the following items:

- ✓ OLED monitor
- ✓ Monitor base
- ✓ Quick start guide
- ✓ Warranty card
- ✓ Power cord
- ✓ HDMI cable (optional)
- ✓ DisplayPort cable (optional)
- ✓ USB Type-C cable (optional)
- ✓ ROG Wall mount kit
- ✓ ROG sticker
- ✓ ROG pouch
- ✓ Microfiber cloth



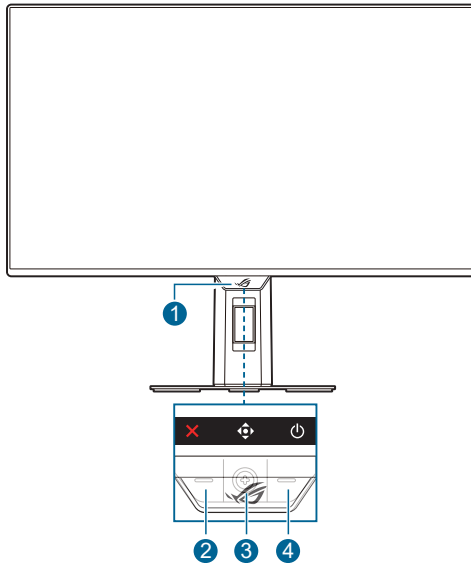
If any of the above items is damaged or missing, contact your retailer immediately.



If you need to replace the power cord or the connection cable(s), please contact ASUS customer service.

1.3 Monitor introduction

1.3.1 Front view




1. Power indicator

- The color definition of the power indicator is as the below table.


Status	Description
Red	ON
OFF	OFF
Amber	Standby mode/No signal
Orange flashing	Pixel cleaning

2. X Close button

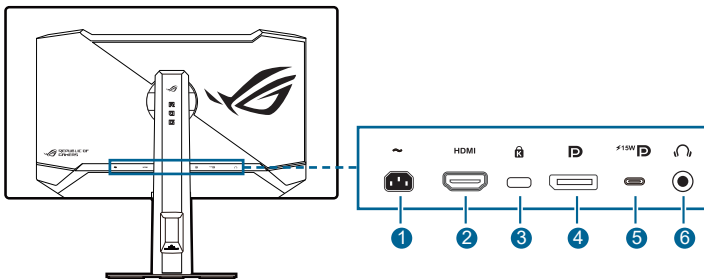
- Turns on the monitor when the monitor enters standby mode or displays the "NO SIGNAL" message.
- Press to activate the Input Select hotkey. To change the hotkey function, go to the **MyFavorite > Shortcut >**  menu.
- Press this button to exit the OSD menu when the OSD menu is activated.

3. Navigation (5-way) button:

- Turns on the monitor when the monitor enters standby mode or displays the "NO SIGNAL" message.

- Press this button to activate the OSD menu. In the OSD menu, press this button to enter the OSD menu or enact the selected OSD menu items. Move the button up/down/right/left to navigate through the settings, increases/decreases values or moves your selection up/down/left/right.
 - Move and hold the button downward for over 5 seconds to enable/disable the Key Lock function.
 - Move the button right to activate the GamePlus hotkey. To change the hotkey function, go to the **MyFavorite > Shortcut >** menu.
 - Move the button up to activate the GameVisual hotkey. To change the hotkey function, go to the **MyFavorite > Shortcut >** menu.
 - Move the button down to activate the Pixel Cleaning hotkey. To change the hotkey function, go to the **MyFavorite > Shortcut >** menu.
4.  Power button
- Turns the monitor on/off.

1.3.2 Back view



1. **AC-IN port.** This port connects the power cord.
2. **HDMI port.** This port is for connection with an HDMI compatible device.
3. **Kensington lock slot.**
4. **DisplayPort.** This port is for connection with a DisplayPort compatible device.
5. **USB 3.2 Gen 1 Type-C (supports DP Alt mode).** This port is for connection with a DisplayPort/USB Type-C compatible device. This port is also for connection with a USB upstream cable, which supports USB power and data delivery (depending on the signal source).








The port offers output voltage for 15W (5V, 3A) power delivery.

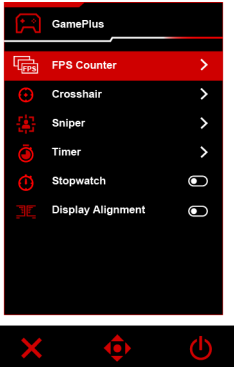
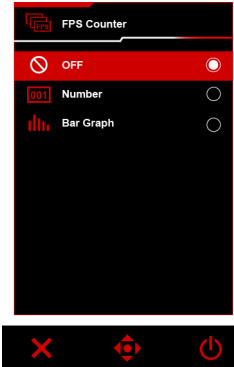
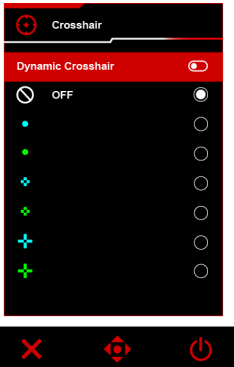
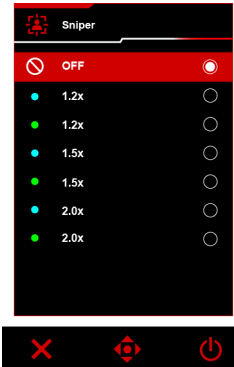
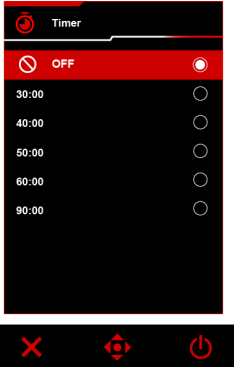
6. **Earphone jack.** This port is only available when an HDMI/DisplayPort/USB Type-C cable is connected.

1.3.3 GamePlus function

The GamePlus function provides a toolkit and creates a better gaming environment for users when playing different types of games. The crosshair overlay with 6 different crosshair options lets you choose the one that best suits the game you're playing. Besides, the Dynamic Crosshair option allows your crosshair to automatically change its color based on the background. There are also on screen timer and stopwatch you can position on the left of the display so you can keep track of the gaming time; while the FPS (frames per second) counter lets you know how smooth the game is running. The position of FPS Counter, Crosshair, Timer and Stopwatch can be moved by the navigation (5-way) button. Sniper function (only available when HDR is disabled on your device)) is customized for first-person shooters. You can select the magnification ratio and the type of alignment in sequence. Display Alignment displays alignment lines on 4 sides of the screen, serving as an easy and handy tool for you to line up multiple monitors perfectly.

To activate GamePlus:




1. Press the GamePlus shortcut button
2. Move the  (5-way) button up/down to select among different functions.
3. Press the  (5-way) button to activate the function you choose, or display the settings.
4. Move the  (5-way) button up/down to navigate through the settings. Highlight the desired setting and press the  (5-way) button to activate it.
5. Press the  Close button to exit.

<p>GamePlus Main Menu</p> 	<p>GamePlus — FPS Counter</p> 
<p>GamePlus — Crosshair</p> 	<p>GamePlus — Sniper</p> 
<p>GamePlus — Timer</p> 	

1.3.4 GameVisual function

The GameVisual function helps you select among different picture modes in a convenient way.

To activate GameVisual:

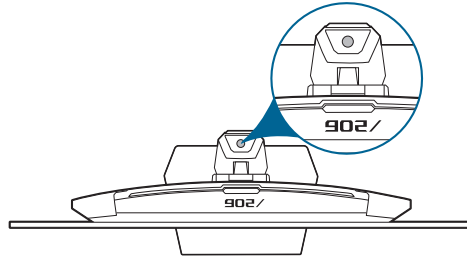
1. Press the GameVisual shortcut button
2. Move the  (5-way) button up/down to highlight a desired setting.
3. Press the  (5-way) button to activate it.
4. Move the  (5-way) button left to go back, or press the **X** Close button to exit.
 - **Scenery Mode:** This is the best choice for scenery photo displaying with GameVisual™ Video intelligence Technology.
 - **Racing Mode:** This is the best choice for racing game playing with GameVisual™ Video intelligence Technology.
 - **Cinema Mode:** This is the best choice for movie watching with GameVisual™ Video intelligence Technology.
 - **RTS/RPG Mode:** This is the best choice for Real-Time Strategy (RTS)/ Role-Playing Game (RPG) playing with GameVisual™ Video intelligence Technology.
 - **FPS Mode:** This is the best choice for First Person Shooter game playing with GameVisual™ Video intelligence Technology.
 - **sRGB Cal Mode:** This is the best choice for viewing photos and graphics from PCs.
 - **MOBA Mode:** This is the best choice for multiplayer online battle arena game playing with GameVisual™ Video intelligence Technology.
 - **Night Vision:** This is the best choice for dark scenery playing with GameVisual™ Video intelligence Technology.
 - **User Mode:** More items are adjustable for color adjustments.



-
- In the **sRGB Cal Mode**, the following function(s) are not user-configurable: **Shadow Boost, Uniform Brightness, Contrast, Blue Light Filter, Display Color Space, Color Temp., Saturation, Six-axis Saturation, Gamma.**
 - In the **MOBA Mode**, the following function(s) are not user-configuration: **Shadow Boost, Saturation, Six-axis Saturation.**
 - In the **Night Vision** mode, the following function(s) are not user-configuration: **Saturation, Six-axis Saturation.**
-

1.3.5 Other Function(s)

- Tripod socket atop
1/4-inch tripod socket on the monitor stand allows you to mount a camera, audio equipment or additional display.



- HDR

The monitor supports HDR format. When detecting HDR content, an "HDR ON" message will pop up and display in the OSD menu.

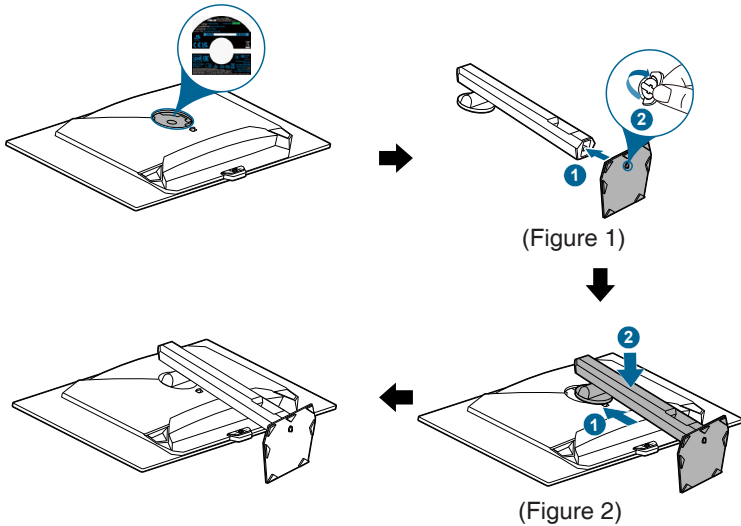


- When displaying HDR content, the following function(s) are not available: **ELMB, Sniper, GameVisual, Shadow Boost, Brightness, Uniform Brightness, Contrast, Blue Light Filter, Display Color Space, Color Temp., Saturation, Six-axis Saturation, Gamma, PIP/PBP, Power Saving Mode, Sound Source.**
- When HDR is enabled, you can go to **Image > HDR Setting > Adjustable HDR** to adjust the following function(s): **Brightness, Uniform Brightness, Contrast, Color Temp., Saturation, Six-axis Saturation, VividPixel.**

2.1 Attaching the arm/base

To assemble the monitor base:

1. Have the front of the monitor face down on a table.
2. Insert the base into the arm. Fix the base to the arm by fastening the bundled screw. (Figure 1)
3. Attach the arm into the monitor. (Figure 2)



We recommend that you cover the table surface with soft cloth to prevent damage to the monitor.

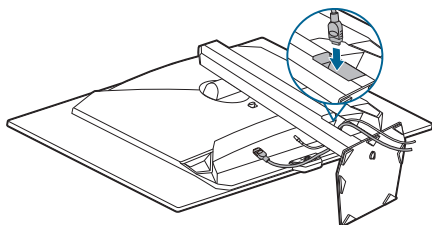


Base screw size: M5 x 25 mm.

2.2 Cable management

You can organize the cables with the help of the cable management slot.

- **Arranging the cables**

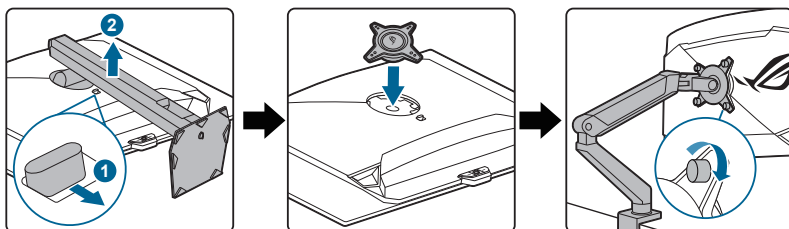


2.3 Detaching the arm/base (for VESA wall mount)

The detachable arm of this monitor is specially designed for VESA wall mount.

To detach the arm:

1. Have the front of the monitor face down on a table.
2. Press the release button, and then detach the arm/base from the monitor.
3. Attach the ROG wall mount kit to the back on the monitor.
4. The monitor can now be mounted using a separately purchased mounting kit, such as the ROG Ergo Monitor Arm AAS01.



We recommend that you cover the table surface with soft cloth to prevent damage to the monitor.



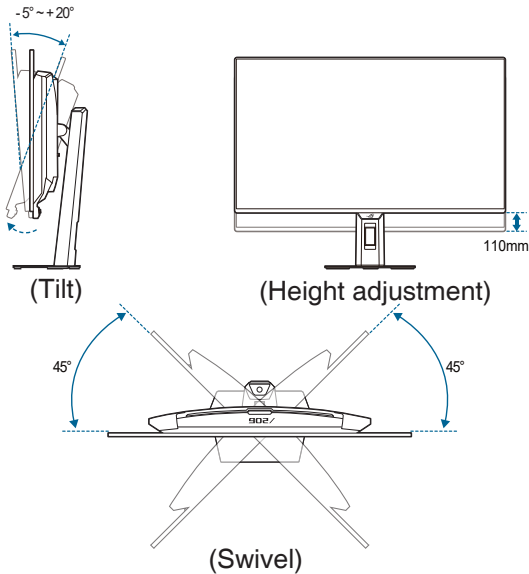
Handle with caution to avoid injury or damage to the monitor.



- The VESA wall mount kit (100 x 100 mm) is purchased separately.
- Use only the UL Listed Wall Mount Bracket with minimum weight/load 22.7kg (Screw size: M4 x 10 mm).

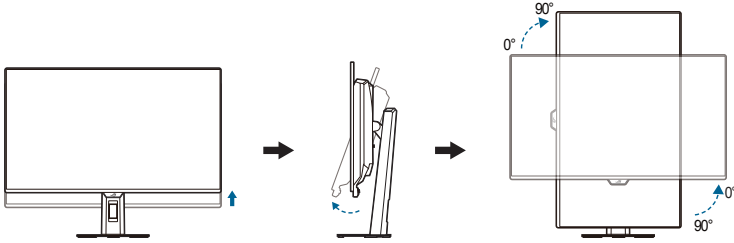
2.4 Adjusting the monitor

- For optimal viewing, we recommend that you look at the full face of the monitor, then adjust the monitor to the angle that is most comfortable for you.
- Hold the stand to prevent the monitor from falling when you change its angle.
- You can adjust the monitor's angle from $+20^{\circ}$ to -5° , and it allows 45° swivel adjustment from either left or right. You can also adjust the monitor's height within 110 mm.



Pivoting the monitor

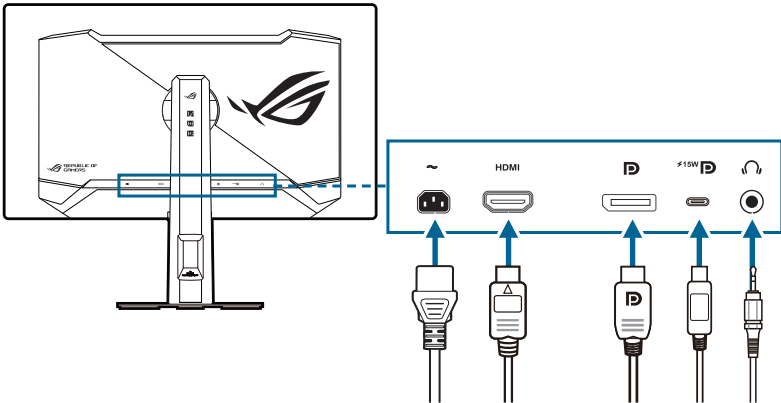
1. Lift the monitor to the highest position.
2. Tilt the monitor to its maximum angle.
3. Pivot the monitor clockwise or counterclockwise to the angle you need.



It is normal that the monitor slightly shakes while you adjust the viewing angle.

2.5 Connecting the cables

Connect the cables as the following instructions:



- **To connect the power cord:** Connect one end of the power cord securely to the monitor's AC input port, the other end to a power outlet.
- **To connect the HDMI/DisplayPort/USB Type-C cable:**
 - a. Plug one end of the HDMI/DisplayPort/USB Type-C cable to the monitor's HDMI/DisplayPort/USB Type-C jack.
 - b. Connect the other end of the HDMI/DisplayPort/USB Type-C cable to your device's HDMI/DisplayPort/USB Type-C jack.

- **To use the earphone:** connect the audio cable to the monitor's earphone jack.




When these cables are connected, you can choose the desired signal from the Input Select item in the OSD menu.



If you need to replace the power cord or the connection cable(s), please contact ASUS customer service.



2.6 Turning on/off the monitor

- **To turn on the monitor:**

Press  Power button on the monitor. See page 1-2 for the location of the power button. If the **Power Indicator** function is enabled and an input source is detected, the power LED will light up red to indicate that the monitor is turned on. The power LED will not light up in **Power Saving Mode**. You can also press any button to turn on the monitor when the monitor is turned off.

- **To turn off the monitor:**

There are 2 ways to turn off the monitor:

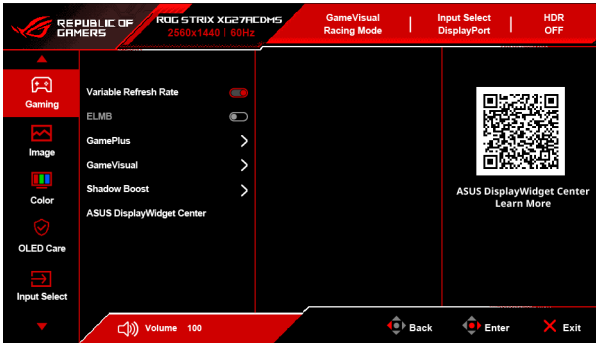
- Press  Power button on the monitor twice.
- Press  Power button on the monitor. Use the navigation (5-way) button to select "Turn Off" and press the navigation (5-way) button to confirm.


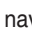

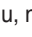

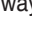
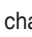

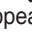


If you need to disconnect power supply, unplug the power cord from the power outlet. Do not unplug the power adapter from the monitor.

3.1 OSD (On-Screen Display) menu

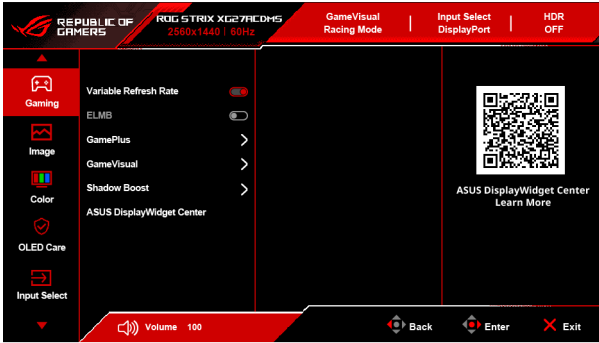
3.1.1 How to reconfigure



1. After the monitor is turned on, press the  (5-way) button to activate the OSD menu.
 2. Move the  (5-way) button up/down to navigate through the functions. Highlight the desired function and press the  (5-way) button to activate it. If the function selected has a sub-menu, move the  (5-way) button up/down again to navigate through the sub-menu functions. Highlight the desired sub-menu function and press the  (5-way) button or move the  (5-way) button right to activate it.
 3. Move the  (5-way) button up/down to change the settings of the selected function.
 4. To exit and save the OSD menu, press the  Close button or press the  (5-way) button until the OSD menu disappears. To adjust other functions, repeat steps 1-3.
- **ASUS DisplayWidget Center:** Displays a QR code for you to access the information about ASUS DisplayWidget Center.

3.1.2 OSD function introduction

1. Gaming



- **Variable Refresh Rate:** Allows an **Variable Refresh Rate** supported* graphics source to dynamically adjust display refresh rate based on typical content frame rates for power efficient, virtually stutter free and low-latency display update.



The following function(s) will be disabled when this function turns on: **PIP/PBP, ELMB.**

***Variable Refresh Rate** can only be activated within 48Hz~240Hz.

*For supported GPUs, minimum PC system and driver requirements, please contact the GPU manufacturers.

- **ELMB:** Extreme Low Motion Blur.



This function is only available when the refresh rate is 140Hz.

When this function is activated, the following function(s) are not available: **Variable Refresh Rate, Uniform Brightness, Aspect Control, Blue Light Filter, PIP/PBP, HDR Setting.**

When this function is activated, the maximum brightness will be 70.

- **GamePlus:** See **1.3.3 GamePlus function** for details.
- **GameVisual:** See **1.3.4 GameVisual function** for details.



The following function(s) will be disabled when this function turns on: **HDR.**

- **Shadow Boost:** Dark color enhancement adjusts monitor gamma curve to enrich the dark tones in an image, making dark scenes and objects much easier to be seen. Additionally, **Dynamic Shadow Boost** brightens dark areas without overexposing bright areas, providing a clear advantage in low-light environments.



This function is only available in **Scenery Mode, Racing Mode, Cinema Mode, RTS/RPG Mode, FPS Mode, Night Vision** or **User Mode**.

- **ASUS DisplayWidget Center:** Displays a QR code for you to access the information about ASUS DisplayWidget Center.

2. Image



- **Brightness:** The adjusting range is from 0 to 100.
- **Uniform Brightness:** With the feature enabled, the system will not adjust the maximum brightness of the screen when the screen is displayed in a different screen size.
- **Contrast:** The adjusting range is from 0 to 100.
- **OLED Anti-Flicker:** Designed to enhance your viewing experience by stabilizing the refresh rate within a specified range.
 - **High:** The refresh rate range is from 200Hz to 280Hz.
 - **Middle:** The refresh rate range is from 140Hz to 280Hz.
- **HDR Setting (High Dynamic Range Setting):** Contains 4 HDR modes:
 - **Gaming HDR**
 - **Cinema HDR**
 - **Console HDR**
 - **DisplayHDR 400 True Black**
 - **Adjustable HDR:** The HDR color setting can be adjusted when the **Adjustable HDR** function is enabled. HDR PQ curve will be affected when **Adjustable HDR** is **ON** under HDR mode.
 - **Dynamic Brightness Boost:** This function is designed for use with **Console HDR**. Enabling this function will enhance the HDR brightness.



When displaying HDR content, the following function(s) are not available: **ELMB, Sniper, GameVisual, Shadow Boost, Brightness, Uniform Brightness, Contrast, Blue Light Filter, Display Color Space, Color Temp., Saturation, Six-axis Saturation, Gamma, PIP/PBP, Power Saving Mode, Sound Source.**

- **Aspect Control:** Adjust the aspect ratio to **16:9** or **Square** to enjoy different gaming scenario.
 - **16:9:** Simply choose **Fill Up**, or **24.5" Simulation** under **Full** for better FPS gaming size; or you can choose **Pixel by Pixel** such as 2992 x 1684 resolution for 24.5" under Windows Display setting.
 - **Square:** Provides multiple aspect ratio choices with different screen sizes, including **Full, Equivalent** and **Pixel by Pixel**.



The following function(s) will be disabled when this function turns on: **PIP/PBP, ELMB.**

- **Blue Light Filter:**
 - **OFF:** No change.
 - **Level 1~Level 4:** The higher the level, the less blue light is scattered. When **Blue Light Filter** is activated, the default settings of **Racing Mode** will be automatically imported. Between **Level 1** to **Level 3**, the Brightness function is user-configurable. **Level 4** is an optimized setting. The Brightness function is not user-configurable.



The monitor uses low blue light panel and compliance with TÜV Rheinland Low Blue Light Hardware Solution at factory reset/default setting mode (**Brightness: 100%, Contrast: 80%, CCT: 6500K, Preset mode: Racing Mode, Power Setting: Power Saving Mode**).



The following function(s) will be disabled when this function turns on: **ELMB, Uniform Brightness.**



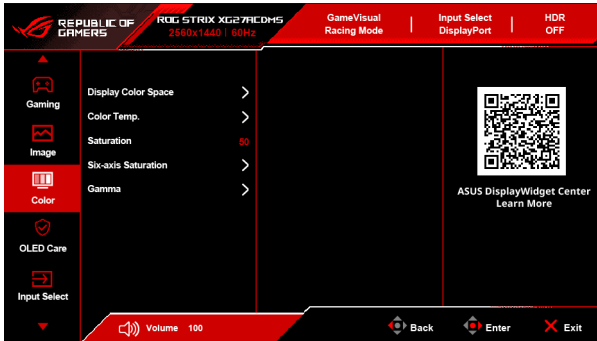
Please refer to the following to alleviate eye strains:

- Users should take some time away from the display if working for long hours. It is advised to take short breaks (at least 5 mins) after around 1 hour of continuous working at the computer. Taking short and frequent breaks is more effective than a single longer break.
- To minimize eye strain and dryness in your eyes, you should rest the eye periodically by focusing on objects that are far away.
- Eye exercises can help to reduce eye strain. Repeat these exercises often. If eye strain continues, please consult a physician. Eye exercises: (1) Repeating look up and down (2) Slowly roll your eyes (3) Move your eyes diagonally.

- High energy blue light may lead to eye strain and AMD (Age-Related Macular Degeneration). Blue Light Filter reduces 70% (max.) harmful blue light to avoid CVS (Computer Vision Syndrome).

- **VividPixel:** This function enhances the outline of the displayed picture and generates high-quality images on screen.

3. Color



- **Display Color Space:** Selects the color space for the monitor color output.
- **Color Temp.:** Contains 8 modes including **4000K, 5000K, 6500K, 7500K, 8200K, 9300K, 10000K** and **User** mode.
- **Saturation:** The adjusting range is from 0 to 100.

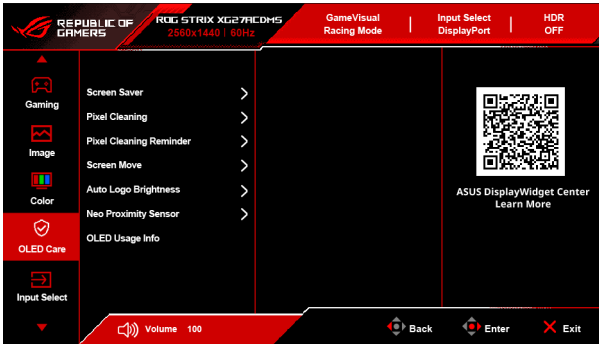


This function is not available when **sRGB Cal Mode, MOBA Mode** or **Night Vision** is selected.

- **Six-axis Saturation:** Adjusts the saturation for R, G, B, C, M, Y.
- **Gamma:** Allows you to set the color mode to **1.8, 2.0, 2.2, 2.4** or **2.6**.

4. OLED Care

Configures the screen saver related set up. You can improve the image quality issues related to image retention when the screen is on for a certain amount of time.



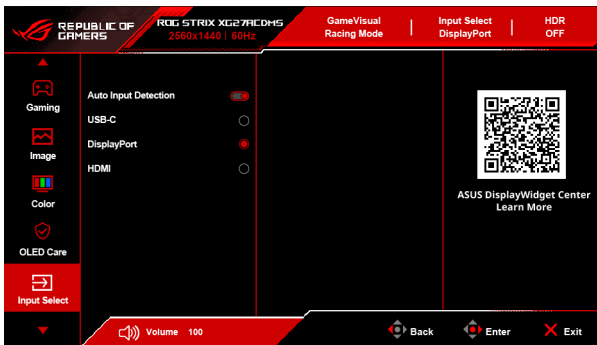
- **Screen Saver:** Enables/disables the screen saver function. The screen brightness will automatically decrease when there is no change on the screen.
- **Pixel Cleaning:** It calibrates any issues that may arise on the screen when your monitor has been turned on for a long time. The process will take approximately 6 minutes. This function will automatically activate when the monitor is turned off. Do not unplug the power cord while it is in progress. If you power on the monitor, the **Pixel Cleaning** will stop operating.
- **Pixel Cleaning Reminder:** Enable or disable displaying pixel cleaning reminder.
- **Screen Move:** Select the screen movement level to prevent image sticking on the display panel.
- **Auto Logo Brightness:** Enable this function to allow the system to automatically adjust the logo brightness to correct the potential picture quality issues.
- **Neo Proximity Sensor:**
 - **Distance Selection:** If the function is enabled and the monitor does not detect the presence of an object within 60 cm - 120 cm (or the selection under **Tailored Mode**) (depending on your selection) for the duration you set in **Screen Off**, the monitor will automatically go blank.
 - The detective range may be slightly different if user wears dark or bright colored clothing. Set the **Distance Selection** to **Max. 120 cm** when wearing black or other dark clothes.



- The monitor resumes normal brightness once it detects human activity again. After a set period of time into power saving mode, the monitor will enter standby mode.
- Please avoid placing objects in front of the sensor (between 60 cm and 120 cm), as it will cause the function of the sensor to fail (misjudging that someone is ahead).

- **Screen Off:** This function allows you to choose the duration after which the monitor will turn blank if it does not detect the presence of an object.
- **OLED Usage Info:** Information regarding the use of the OLED will be displayed.

5. Input Select



- **Auto Input Detection:** When enabled, the system will automatically select the latest inserted I/O port.
- **USB-C, DisplayPort, HDMI:** Manually selects the input source.

6. PIP/PBP

The **PIP/PBP** allows you to open up sub-window(s) connected from any video source.



- The following function(s) will be disabled when this function turns on:
Variable Refresh Rate, ELMB, Sniper, Aspect Control, DSC Support.
- **PIP/PBP Mode** is used under 60Hz.
- **PIP/PBP Mode** does not support HDR function.



- **PIP/PBP Mode:** Selects PIP, PBP mode or turn it off.
- **PIP/PBP Source:** Select the video input source for each PIP/PBP window.
- **Color Setting:** Sets **GameVisual** mode for each PIP/PBP window.
- **PIP Size:** Adjusts the PIP size to **Small, Middle, or Large**.

7. MyFavorite



- **Shortcut:**
 - **Shortcut:** Sets the shortcut functions for shortcut buttons.




When a certain function is selected or activated, your shortcut button may not support. Available function choices: **GamePlus**, **GameVisual**, **Brightness**, **Mute**, **Shadow Boost**, **Contrast**, **Input Select**, **HDR Setting**, **Blue Light Filter**, **Color Temp.**, **Volume (Earphone Out)**, **Pixel Cleaning**, **Customized Setting-1**, **Customized Setting-2**.

- **Customized Setting:**
 - **Setting 1/Setting 2:** Loads/Saves all settings on the monitor.

8. System Setup



- **Language:** There are 23 languages for your selection, including English, French, German, Italian, Spanish, Dutch, Portuguese, Russian, Czech, Croatian, Polish, Romanian, Hungarian, Turkish, Simplified Chinese, Traditional Chinese, Japanese, Korean, Thai, Indonesian, Persian, Ukrainian, Vietnamese.
- **Sound:** Sets the sound related settings from this menu.
 - **Volume (Earphone Out):** The adjusting range is from 0 to 100.
 - **Mute:** Toggles the monitor sound between on and off.
 - **Sound Source:** Decides the monitor sound comes from which source.
- **Power Indicator:** Turns the power LED indicator on/off.
- **Power Key Lock:** Enables or disables the power key.
- **Key Lock:** To disable all function keys. Move and hold the  (5-way) button downward for over 5 seconds to cancel the key lock function.
- **Power Setting:**
 - **Performance Mode:** Performance mode setting may result in higher power consumption.
 - **Power Saving Mode:** Power saving mode may cause limited luminance performance.



Certain functions that consume power will be disabled when **Power Saving Mode** is selected. If you wish to enable the functions, choose **Performance Mode**.



Please turn off HDR function before activating the **Power Saving Mode**.

- **OSD Setup:**
 - Adjusts the OSD position.
 - Adjusts the OSD timeout from 10 to 120 seconds.
 - Adjusts the OSD background from opaque to transparent.
 - Enables or disables the DDC/CI function.
- **DisplayPort Stream:** Compatibility with graphic card. Select **DisplayPort 1.2**, or **DisplayPort 1.4** by graphic card supported DP version.
- **DSC Support:** DisplayPort Display Stream Compression.
- **ASUS Power Sync:** Allows the power on/off control of the HDMI-connected console device or setup box, such as Apple TV, Sony PlayStation, Xbox Series X/S, Nintendo Switch through the monitor. The default setting is **ON**. If the monitor is turned on, the CEC source device will automatically power on, and vice versa. If the CEC source device is turned on, the monitor will automatically power on.
- **Information:** Shows the monitor information.
- **All Reset:** Selecting **Yes** allows you to restore the default settings.

3.2 Specifications summary

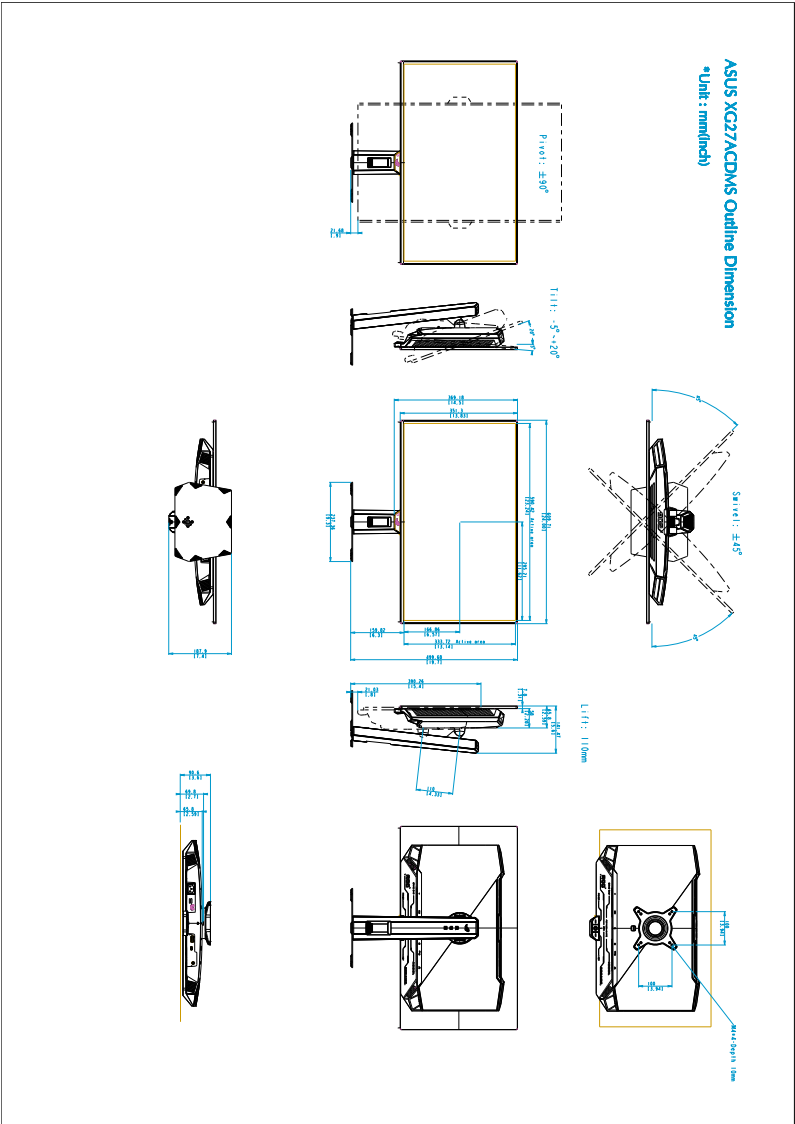
Panel Type	QD OLED
Panel size	27" (16:9, 68.5 cm) wide screen
Max. Resolution	2560 x 1440
Pixel pitch	0.2292 mm x 0.2292 mm
Brightness	SDR 250 cd/m ² (Typ.), HDR E/P 1000 cd/m ² (Typ. APL 3%)
Contrast Ratio (Typ.)	1,500,000:1
Viewing angle (H/V) CR>10	178°/178°
Display colors	1073.7 M (10 bit)
Color gamut	DCI-P3 99%
Response time	0.03 ms
Color temperature selection	8 color temperatures
Digital input	HDMI v2.1 x 1, DisplayPort v1.4 x 1, USB Type-C x 1
Earphone jack	Yes
USB 3.2 Gen 1 port	1 x USB Type-C
USB 2.0 port	No
Color	Black
Power LED	Red (On)/Amber (Standby)/Orange flashing (Pixel cleaning)
Tilt	+20° ~ -5°
Swivel	+45° ~ -45°
Pivot	+/-90°
Height Adjustment	110 mm
Kensington lock	Yes
Voltage rating	AC: 100~240V
Power consumption	Power On: < 28 W** (Typ.), Standby: < 0.5 W, Power Off: < 0.3 W
Temperature (Operating)	0°C~40°C
Temperature (Non-operating)	-20°C~+60°C
Dimension (W x H x D) without stand	609.7 x 369.2 x 65.8 mm
Dimension (W x H x D)	609.7 x 449.68 x 187.9 mm (with stand, highest) 609.7 x 390.26 x 187.9 mm (with stand, lowest) 860 x 162 x 500 mm (package)
Weight (Esti.)	3.83 kg (without stand); 6.08 kg (Net); 8.52 kg (Gross)
Multi-languages	23 languages (English, French, German, Italian, Spanish, Dutch, Portuguese, Russian, Czech, Croatian, Polish, Romanian, Hungarian, Turkish, Simplified Chinese, Traditional Chinese, Japanese, Korean, Thai, Indonesian, Persian, Ukrainian, Vietnamese)

Accessories	Quick start guide, warranty card, power cord, HDMI cable (optional), DisplayPort cable (optional), USB Type-C cable (optional), ROG wall mount kit, ROG sticker, ROG pouch, Microfiber cloth
Compliance and Standards	cTUVus, FCC, ICES-3, CB, CE, ErP, WEEE, EU Energy label , UkrSEPRO, Ukraine Energy, CU, EAC RoHs, CU, CCC, China Energy Label, BSMI , RCM, VCCI, PSE, PC Recycle , J-MOSS, KC, KCC, KMEPS, PSB, Vietnam Energy, RoHs, CEC, Windows 10 & 11 WHQL, TUV Flicker free, TUV Low Blue Light

*Specifications are subject to change without notice.

**measuring a screen brightness of 200 nits without audio/USB/Card reader connection.

3.3 Outline dimensions



3.4 Troubleshooting (FAQ)

Problem	Possible Solution
Power LED is not ON	<ul style="list-style-type: none"> • Press any button to check if the monitor is in the ON mode. • Check if the power cord is properly connected to the monitor and the power outlet. • Check if the power switch is ON.
The power LED lights amber and there is no screen image	<ul style="list-style-type: none"> • Check if the monitor and the computer are in the ON mode. • Make sure the signal cable is properly connected the monitor and the computer. • Inspect the signal cable and make sure none of the pins are bent. • Connect the computer with another available monitor to check if the computer is properly working.
Screen image is too light or dark	<ul style="list-style-type: none"> • Adjust the Contrast and Brightness settings via OSD.
Screen image bounces or a wave pattern is present in the image	<ul style="list-style-type: none"> • Make sure the signal cable is properly connected to the monitor and the computer. • Move electrical devices that may cause electrical interference.
Screen image has color defects (white does not look white)	<ul style="list-style-type: none"> • Inspect the signal cable and make sure that none of the pins are bent. • Perform All Reset via OSD. • Adjust the R/G/B color settings or select the Color Temperature via OSD.
No sound or sound is low	<ul style="list-style-type: none"> • Ensure that the HDMI/DisplayPort/USB Type-C cable is properly connected to the monitor and the computer. • Adjust the volume settings of both your monitor and HDMI/DisplayPort/USB Type-C device. • Ensure that the computer sound card driver is properly installed and activated.
HDR content is not played properly	<ul style="list-style-type: none"> • Make sure the input source supports HDR playback (with proper system settings and latest software). • Make sure the content is HDR encoded.

3.5 Supported operating modes

- For Pixel by Pixel timings

Resolution frequency	Refresh rate (Hz)	Input source
640 x 480	60/75	HDMI/DP/USB-C
800 x 600	60/75	HDMI/DP/USB-C
1024 x 768	60/75	HDMI/DP/USB-C
1280 x 960	60	HDMI/DP/USB-C
1280 x 1024	60	HDMI/DP/USB-C
1280 x 720	60	HDMI/DP/USB-C
1600 x 1200	60	HDMI/DP/USB-C
1920 x 1080	60	HDMI/DP/USB-C
640 x 480P	59.94/60	HDMI/DP/USB-C
720 x 480P	59.94/60	HDMI/DP/USB-C
720 x 576P	50	HDMI/DP/USB-C
1280 x 720P	50/59.94/60	HDMI/DP/USB-C
1920 x 1080P	24/25/30/50/60/100/119.88/120	HDMI/DP/USB-C
3840 x 2160	24/25/30/50/60/119.88/120/100	HDMI
2560 x 1440	60/120/140/240/280	HDMI/DP/USB-C
2560 x 1440	144	DP/USB-C
1920 x 1080	240/280	HDMI/DP/USB-C

- For Square timings

Resolution frequency	Refresh rate (Hz)	Input source
640 x 480	60/75	HDMI/DP/USB-C
800 x 600	60/75	HDMI/DP/USB-C
1024 x 768	60/75	HDMI/DP/USB-C
1280 x 960	60	HDMI/DP/USB-C
1280 x 1024	60	HDMI/DP/USB-C
1280 x 720	60	HDMI/DP/USB-C
1600 x 1200	60	HDMI/DP/USB-C
1920 x 1080	60	HDMI/DP/USB-C
640 x 480P	59.94/60	HDMI/DP/USB-C
720 x 480P	59.94/60	HDMI/DP/USB-C

Resolution frequency	Refresh rate (Hz)	Input source
720 x 576P	50	HDMI/DP/USB-C
1280 x 720P	50/59.94/60	HDMI/DP/USB-C
1920 x 1080P	24/25/30/50/60/100/119.88/120	HDMI/DP/USB-C
3840 x 2160	24/25/30/50/60/119.88/120/100	HDMI
2560 x 1440	60/120	HDMI/DP/USB-C
1280 x 960	280	HDMI/DP/USB-C
1024 x 768	280	HDMI/DP/USB-C
1728 x 1080	280	HDMI/DP/USB-C
1920 x 1440	280	HDMI/DP/USB-C
1440 x 1080	280	HDMI/DP/USB-C
1152 x 864	280	DP/USB-C

- **For Full (24.5" Simulation) aspect control timings**

Resolution frequency	Refresh rate (Hz)	Input source
640 x 480	60/75	HDMI/DP/USB-C
800 x 600	60/75	HDMI/DP/USB-C
1024 x 768	60/75	HDMI/DP/USB-C
1280 x 960	60	HDMI/DP/USB-C
1280 x 1024	60	HDMI/DP/USB-C
1280 x 720	60	HDMI/DP/USB-C
1600 x 1200	60	HDMI/DP/USB-C
1920 x 1080	60	HDMI/DP/USB-C
640 x 480P	59.94/60	HDMI/DP/USB-C
720 x 480P	59.94/60	HDMI/DP/USB-C
720 x 576P	50	HDMI/DP/USB-C
1280 x 720P	50/59.94/60	HDMI/DP/USB-C
1920 x 1080P	24/25/30/50/60/100/119.88/120	HDMI/DP/USB-C
3840 x 2160	24/25/30/50/60/119.88/120/100	HDMI
2560 x 1440	60	HDMI/DP/USB-C
2560 x 1440	120	HDMI/DP/USB-C
2368 x 1332	60	HDMI/DP/USB-C
2368 x 1332	120	HDMI/DP/USB-C
2368 x 1332	280	HDMI/DP/USB-C

- **For Full (Fill Up) aspect control timings**

Resolution frequency	Refresh rate (Hz)	Input source
640 x 480	60/75	HDMI/DP/USB-C
800 x 600	60/75	HDMI/DP/USB-C
1024 x 768	60/75	HDMI/DP/USB-C
1280 x 960	60	HDMI/DP/USB-C
1280 x 1024	60	HDMI/DP/USB-C
1280 x 720	60	HDMI/DP/USB-C
1600 x 1200	60	HDMI/DP/USB-C
1920 x 1080	60	HDMI/DP/USB-C
640 x 480P	59.94/60	HDMI/DP/USB-C
720 x 480P	59.94/60	HDMI/DP/USB-C
720 x 576P	50	HDMI/DP/USB-C
1280 x 720P	50/59.94/60	HDMI/DP/USB-C
1920 x 1080P	24/25/30/50/60/100/119.88/120	HDMI/DP/USB-C
3840 x 2160	24/25/30/50/60/119.88/120/100	HDMI
2560 x 1440	60/120/140/240/280	HDMI/DP/USB-C
2560 x 1440	144	DP/USB-C
1920 x 1080	240/280	HDMI/DP/USB-C

- **For PBP timings**

Resolution frequency	Refresh rate (Hz)	Input source
640 x 480	60	HDMI/DP/USB-C
800 x 600	60	HDMI/DP/USB-C
1024 x 768	60	HDMI/DP/USB-C
1280 x 960	60	HDMI/DP/USB-C
1280 x 1024	60	HDMI/DP/USB-C
1280 x 720	60	HDMI/DP/USB-C
1600 x 1200	60	HDMI/DP/USB-C
1920 x 1080	60	HDMI/DP/USB-C
640 x 480P	59.94/60	HDMI/DP/USB-C
720 x 480P	59.94/60	HDMI/DP/USB-C
720 x 576P	50	HDMI/DP/USB-C

Resolution frequency	Refresh rate (Hz)	Input source
1280 x 720P	50	HDMI/DP/USB-C
1280 x 720P	59.94/60	HDMI/DP/USB-C
1920 x 1080P	24/25/30/50/60	HDMI/DP/USB-C
3840 x 2160	24/25/30/50/60	HDMI
2560 x 1440	60	HDMI/DP/USB-C
1280 x 1440	60	HDMI/DP/USB-C

- **For PIP timings**

Resolution frequency	Refresh rate (Hz)	Input source
640 x 480	60	HDMI/DP/USB-C
800 x 600	60	HDMI/DP/USB-C
1024 x 768	60	HDMI/DP/USB-C
1280 x 960	60	HDMI/DP/USB-C
1280 x 1024	60	HDMI/DP/USB-C
1280 x 720	60	HDMI/DP/USB-C
1600 x 1200	60	HDMI/DP/USB-C
1920 x 1080	60	HDMI/DP/USB-C
640 x 480P	59.94/60	HDMI/DP/USB-C
720 x 480P	59.94/60	HDMI/DP/USB-C
720 x 576P	50	HDMI/DP/USB-C
1280 x 720P	50	HDMI/DP/USB-C
1280 x 720P	59.94/60	HDMI/DP/USB-C
1920 x 1080P	24/25/30/50/60	HDMI/DP/USB-C
3840 x 2160	24/25/30/50/60	HDMI
2560 x 1440	60	HDMI/DP/USB-C

