

PHILIPS

Electric Shaver

Shaver 1000 Series

PowerCut Blades

4D Flex Heads

One-touch open



S1142/00



Fast, clean shave

Philips Shaver 1000 Series Electric Shaver gives you a fast, clean shave and good value. The 27 self-sharpening PowerCut Blades, and full washability make the shaver easy to use and always reliable.

Easy to use

- Suitable for head shaving
- 40 minutes of cordless shaving from an 8 hour charge
- Ergonomic grip for comfortable handling
- Waterproof for easy cleaning or shower use
- One-touch open for easy cleaning
- Battery indicator to know when it's time to charge
- Protective cap keeps the shaving head clean between shaves
- Convenient charging

A clean shave

- PowerCut Blades for a consistent, clean shave
- 4D Flex Heads follow your face for a comfortable shave

Sustainable

- Made with care for you and the planet

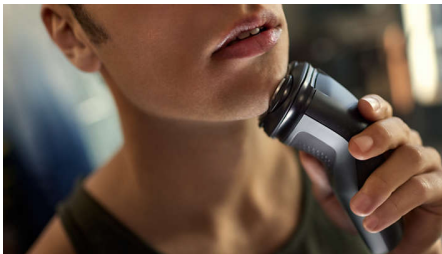
Highlights

PowerCut Blades



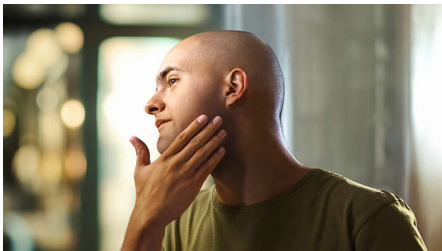
27 self-sharpening blades consistently cut each hair right above skin level for a smooth, even finish every time. Our self-sharpening blades stay like new for 2 years.

4D Flex Heads



Floating heads flex in four directions to maintain even contact with your skin, protecting it from nicks and cuts.

Suitable for head shaving



The shaver is designed to be a versatile solution that allows you to confidently shave both your face and head

One-touch open



The shaver head flips open at the touch of a button so you can rinse it clean under running water.

40 minutes of cordless shaving



A durable NiMH battery provides 40 minutes of shaving power on an 8 hour charge. That's good for about 13 shaves.

Ergonomic grip



Never lose your grip. The ergonomic handle with rubber stays secure and comfortable, even when wet.

Waterproof (IPX7)



Rinse under running water or shave in the shower. The IPX7 waterproof rating means it can be submerged in one metre of water for up to 30 minutes.

Battery indicator



Don't get caught with an empty battery. The battery indicator lets you know if the battery is low, empty or charging.

USB-A Charging



At Philips, we drive sustainability in all aspects of product creation. Our ambition is to reduce waste and minimise the number of USB adapters we put in the market. Should you need an adapter, a suitable supply unit is available via: www.philips.com/support

Specifications

Accessories

Maintenance: Protective cap

Power

Run time: 40 min/13 shaves

Battery Type: NiMH

Charging time: 8 hours full charge

Design

Colour: Deep Grey

Handle: Ergonomic grip & handle

Service

Replacement head: Replace every 2 yrs with SH30

2 year warranty

Shaving Performance

Contour following: 4D Flex Heads

Shaving system: PowerCut blade system, 27 self-sharpening blades, 55.000 cuts/minute

Ease of use

Display: Charging indicator

Cleaning: Fully washable

Charging: USB-A Charging (5 V⁼⁼ / ≥1 A)

Operation: Cordless use only

Waterproof: Waterproof IPX7, Showerproof

